



# Mission:

Kindness Integrity  
Support Dedication

2004-2005

## 2004-2005 BOARD MEMBERS

### OFFICERS

- President:** Sean Singleton
- Internal VP:** Kayla Hobbs
- External VP:** Mona Pearson
- Secretary:** Krista Mooney
- Treasurer:** Stephanie Cater

### INTERNAL COMMITTEE LEADERS

**Bids for the Kids**  
Jaimi Morhard

**Grants**  
Rashad Stinson

**Historian**  
Kerry McCombs

**Membership**  
Scott Higgins  
Dwayne Maddron

**Public Relations**  
Allie Merzer  
Joel Silver

**Scholarships & Smiles**  
Adria Cavany  
Mark Ravenscraft

### EXTERNAL COMMITTEE LEADERS

**Community Events**  
Adeena Alam  
Amy Wright

**Logistics**  
Jamie Taylor

**Sports, Leisure, & Kids**  
Scott Dudley  
Sherman Rosier

**Tutoring & Mentoring**  
Kerry McCombs

For individual contact information, please visit the "Contact Us" link at: <http://www.Tallahassee25.org>

## 2005 BIDS FOR THE KIDS: "A NIGHT OF SUPERHEROES"

Whew... 2005 Bids for the Kids is behind us! Now, it's finally time to relax, and revel in all we've accomplished. The event was a HUGE success, from the amazing attendance, to the amount of funds we raised (more than ever before) to continue supporting us as we moved forward with our mission of "lending kids a helping hand."

As you know, this year's theme, "A Night of Superheroes," allowed us to honor those in our community that have gone above and beyond the call of duty to provide for the children in our community. We had an unmatched group of nominees for this honor, which was pain-

takingly narrowed down to the following finalists: **Shannon Baker** (Director, Tallahassee Marine Institute), **Allen & Cissy Boyd and Family** (Annual Dove Hunt), **Julie Boyd** (Area Adminis-

trator, Florida Baptist Children's Home, Tallahassee Campus), **Dr. John Bruno** (Florida State University, Education Learning Community), **Craig Fletcher** (Tallahassee Community Col- lege CROP Program), **Arlinda Hayes** (Director, Childcare Network), **Jack Levine** (President, Advocacy Resources), **Natalie Miller** (Enrollment & Match Support Specialist, Big Brothers/Big Sisters), **Angela H. Orkin** (Executive Director, State-wide Guardian ad Litem Office), **Kelly Otte** (Executive Director, Refuge House), **Dr. Pamela Phelps** (Director/Owner, Creative Center for Research and Training), and **Brenda Rabalais** (Founder and Adult Counselor, Lee's Place).

Thank you so much to everyone that assisted with, contributed to, volunteered for, and/or attended our 2005 Bids for the Kids! You are ALL Superheroes to the Tallahassee 25!!



trator, Florida Baptist Children's Home, Tallahassee Campus), **Dr. John Bruno** (Florida State University, Education Learning Community), **Craig Fletcher** (Tallahassee Community Col-

Thank you for being a Superhero!! Thank you for being a Superhero!! Thank you for being a Superhero!!

## CONGRATULATIONS TO OUR VERY DESERVING 2005 T25 SUPERHEROES!!

This edition of Mission: KIDS would be meaningless without recognizing those chosen as our Superheroes! These individuals were singled out from all of the nominees because of their unparalleled dedication and commitment to children in our community. We thank you from the bottom of our hearts!

JACK LEVINE

ANGELA H. ORKIN

DR. PAMELA PHELPS

BRENDA RABALAIS

### INSIDE THIS ISSUE:

PREZ'S PERSPECTIVE	2
BIDS SPONSORS	2
MEMBER OF MONTH	2
MEMBER MOMENTS	3
C&C'S	3
CONTACT INFO	4
CALENDAR	4

## PRESIDENT'S PERSPECTIVE



I cannot thank the Bids committee enough for ensuring that the Tallahassee 25 had an extremely successful "Bids for the Kids." *The Night of Superheroes* fundraiser resulted in an all-time high, with nearly 400 people in attendance. We are grateful to our sponsors and silent auction item donors, and look forward to enjoying relationships with them for some time to come! Because of their contributions, T25 is ready to tackle the coming

year — which we will once again administer two college scholarships, help more than 100 children over just the holidays, and mentor kids throughout the Tallahassee area all year long.

As the 2004-05 Board winds down, we will finish our terms off with a Motocross SLaK event in February, the monthly preschool playtime (my favorite!), another great Evening with the Kids, and a social that everyone can appreciate!

Look for more information on the website, as T25 embarks on some new initiatives, including partnering with the Tallahassee Coalition for the Homeless, as well as returning to some of our original kids' events. We will need your leadership!

Thank you for all you do!

- Sean Singleton  
T25 President

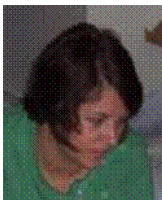
*We would like to, once again, extend a huge thank you to our Hero (\$1000 & Above) and In-Kind Sponsors for Bids for the Kids:*

48HOURPRINT.COM  
BOOTH PROPERTIES  
BOYD BROTHERS INC.  
CAFÉ CABERNET  
CHRIS BROCK OF BROCK DESIGNS  
CLEAR CHANNEL  
CUSTOM COLOR CORPORATION  
DEVÖE MOORE

FLORIDA ENVELOPE COMPANY  
FSU EDUCATION LEARNING COMMUNITY  
GOVERNORS CLUB  
GT ENTERTAINMENT  
HILLY FIELDS FLORIST AND GIFTS  
JIM DOWLING  
KINKO'S  
MAINLINE INFORMATION SYSTEMS  
MAYO WOODWARD

MODERN MAILERS  
PRODUCTION SUPPORT GROUP  
ROWLAND PUBLISHING  
SILVER PRODUCTIONS  
SIR SPEEDY  
STEVE WEBSTER  
TRI-EAGLE SALES  
WACHOVIA

## MEET THE T25 JANUARY MEMBER OF THE MONTH — ASHLEY ANDERSON!



Ashley Anderson

The Tallahassee 25 Board would like to congratulate Ashley Anderson on being selected as our January Member of the Month! Now, we'd like to let all of you know a little bit more about this outstanding member!

**Ashley Anderson** is 26 years old, and grew up in Wakulla County, Florida. She attended the University of West Florida, where she graduated with a Bachelor of Arts in Psychology in 2000. After returning to Tallahassee, she received her Master's degree in Social Work from The

Florida State University in 2004.

Ashley has been a School Social Worker for the last 4.5 years, and is very involved with Special Olympics Florida, as the County Coordinator and Head Coach for Wakulla. Her two "kids" — Boomer (her black lab) and Belle (her beagle) are the light of her life, and her hobbies include cooking, gardening, outdoor activities, and redecorating her home.

She has been a member of T25 since November 2004 (in which time she has attended almost every event or meeting the organization has held), and working with children and their families is some-

thing she finds rewarding in both her profession and volunteer activities. She stated that her most rewarding T25 moment so far was the Holiday Happiness event, and that even though she never saw the children that she shopped for, it was great knowing that she was helping a few more children have a Merry Christmas." She loves kids, and she looks forward to many exciting events ahead!

Congratulations, Ashley, on being selected as the January member of the month, and thank you so much for the amazing contribution you have made to T25 in such a short time!

**MEMBER MOMENTS**



2005 Bids for the Kids



2005 Bids for the Kids



2005 Bids for the Kids

**CONTRIBUTIONS & CELEBRATIONS**

This column highlights a special volunteer opportunity (“contributions”) & social opportunity (“celebrations”) each month.

Spotlight on...

**FREESTYLE MOTOCROSS!**

Our SLaK committee is at it again! The kids of CCYS will be joining SLaK and T25 members for an exciting evening of IFMA Freestyle Motocross FMX at the Leon County Civic Center on Saturday, February 26, at 8:00pm. We hope that you can all join us for this revved up event! If you would like more information or would like to get involved, please contact Scott Dudley (545.5915) or Sherman Rosier (228.3422).



**CONTRIBUTIONS**



**CELEBRATIONS**

Spotlight on...

**JUST CAN'T GET ENOUGH OF BIDS FOR THE KIDS!**

The Executive Board would like to extend a special thank you to Jaimi Morhard & the rest of the Bids Committee for all of the effort put in to pull off the most amazing Bids we have had yet! We cannot begin to thank you enough for your invaluable contributions to Tallahassee 25, but we will do our best to let you know, each and every day, how much you are appreciated! See below for more...



**TUTORING & MENTORING GOES TRIVIA – AGAIN!!**

For anyone who wasn't at Girls and Boys Town on January 26th for our T25 Evening with the Kids, you missed an encore presentation of Committee Leader Kerry McCombs' Trivia Night! As if it were even possible to build on the huge success of her opening act, Kerry, once again, ensured that the kids and T25 members alike would have a great time! Thank you Kerry, and we hope to see many more volunteers next time!!

**A HUGE THANK YOU TO OUR AMAZINGLY INVOLVED AND TIRELESSLY DEDICATED MEMBERS OF THE BIDS COMMITTEE!**

- JAM MORHARD – CHAIRPERSON
- MARSHA BEST – PR SUBCOMMITTEE CHAIR
- SARA BIGGS – AUCTION SUBCOMMITTEE CHAIR
- JOY FREEMAN – LOGISTICS SUBCOMMITTEE CHAIR
- CHRISTINA WIMBERLEY – SPONSORSHIP SUBCOMMITTEE CHAIR

~~~~~

- DD AGOSTINI
- ADEENA ALAM
- APRIL BROWN
- STEPHANIE CATER
- ADRIA CAVANY
- KAYLA HOBBS
- TENILLE HAEGELE

- SHANNON LANE
- ALLIE MERZER
- KRISTA MOONEY
- ANGELA PASSERO
- SEAN SINGLETON
- JOEL SILVER
- ANNA STEMER
- RASHAD STINSON
- TERRY TAYLOR
- GREG TISH
- AMELIA VALENCIC
- LARRY WASZINK
- DANA WESTWOOD

You can always get the most up to date information at our website!

<http://www.Tallahassee25.org>

## TALLHASSEE 25

P.O. Box 11293

Tallahassee, Florida 32302

Hotline: 850.309.2525

Email: [info@Tallahassee25.org](mailto:info@Tallahassee25.org)

Website: [www.Tallahassee25.org](http://www.Tallahassee25.org)

Contact information for Individual Committee Leaders can be found at the "Contact" Link on our website



POINTS  
OF LIGHT  
A W A R D  
NATIONAL



**lending kids  
a helping hand**

<http://www.Tallahassee25.org>

### What is the Tallahassee 25?

The Tallahassee 25 is a volunteer-driven, non-profit organization incorporated with the State of Florida, with no paid staff. Twenty five young professionals established the organization as charter members in March 1997. After simply collecting contributions for a little league baseball team, they realized they shared a common mission to help area children and wanted to continue that vision with a more structured commitment. With that, the charter members formed this non-profit organization and established its bylaws.

The vision of the Tallahassee 25 is "to create and inspire hope for children and families in order to improve our community's quality of life."

The mission of the Tallahassee 25 is "to create opportunities for local children, through support and hands-on involvement in programs and activities which allow kids to enjoy their youth — while also helping them learn principles such as responsibility, self-esteem, self-discipline, and teamwork."

## FEBRUARY CALENDAR

| Sunday | Monday                                                                     | Tuesday                                                                                                                                                                                                                                                                                                                                                                                                                                                                                                                                                                  | Wednesday                                                                 | Thursday        | Friday | Saturday                                                 |   |   |   |   |   |   |   |   |   |   |   |   |    |    |    |    |    |    |    |    |    |    |    |    |    |    |    |    |    |    |    |    |    |    |  |  |  |  |  |                                                                                                                                                                                                                                                                                                                                                                                                                                                                                             |  |   |   |   |   |   |   |   |   |   |   |   |    |    |    |    |    |    |    |    |    |    |    |    |    |    |    |    |    |    |    |    |    |    |  |  |
|--------|----------------------------------------------------------------------------|--------------------------------------------------------------------------------------------------------------------------------------------------------------------------------------------------------------------------------------------------------------------------------------------------------------------------------------------------------------------------------------------------------------------------------------------------------------------------------------------------------------------------------------------------------------------------|---------------------------------------------------------------------------|-----------------|--------|----------------------------------------------------------|---|---|---|---|---|---|---|---|---|---|---|---|----|----|----|----|----|----|----|----|----|----|----|----|----|----|----|----|----|----|----|----|----|----|--|--|--|--|--|---------------------------------------------------------------------------------------------------------------------------------------------------------------------------------------------------------------------------------------------------------------------------------------------------------------------------------------------------------------------------------------------------------------------------------------------------------------------------------------------|--|---|---|---|---|---|---|---|---|---|---|---|----|----|----|----|----|----|----|----|----|----|----|----|----|----|----|----|----|----|----|----|----|----|--|--|
|        |                                                                            |                                                                                                                                                                                                                                                                                                                                                                                                                                                                                                                                                                          | 1<br>Groundhog Day<br>Last Quarter                                        | 2               | 3      | 4                                                        |   |   |   |   |   |   |   |   |   |   |   |   |    |    |    |    |    |    |    |    |    |    |    |    |    |    |    |    |    |    |    |    |    |    |  |  |  |  |  |                                                                                                                                                                                                                                                                                                                                                                                                                                                                                             |  |   |   |   |   |   |   |   |   |   |   |   |    |    |    |    |    |    |    |    |    |    |    |    |    |    |    |    |    |    |    |    |    |    |  |  |
| 6      | 7                                                                          | 8<br>New Moon                                                                                                                                                                                                                                                                                                                                                                                                                                                                                                                                                            | 9<br>Ash Wednesday<br>T25 GENERAL MEETING AT PARADIGM<br>                 | 10              | 11     | 12<br>Lincoln's Birthday                                 |   |   |   |   |   |   |   |   |   |   |   |   |    |    |    |    |    |    |    |    |    |    |    |    |    |    |    |    |    |    |    |    |    |    |  |  |  |  |  |                                                                                                                                                                                                                                                                                                                                                                                                                                                                                             |  |   |   |   |   |   |   |   |   |   |   |   |    |    |    |    |    |    |    |    |    |    |    |    |    |    |    |    |    |    |    |    |    |    |  |  |
| 13     | 14<br>Valentine's Day<br>PRESCHOOL PLAYTIME AT CHILDCARE NETWORK (T&M)<br> | 15                                                                                                                                                                                                                                                                                                                                                                                                                                                                                                                                                                       | 16<br>First Quarter                                                       | 17              | 18     | 19                                                       |   |   |   |   |   |   |   |   |   |   |   |   |    |    |    |    |    |    |    |    |    |    |    |    |    |    |    |    |    |    |    |    |    |    |  |  |  |  |  |                                                                                                                                                                                                                                                                                                                                                                                                                                                                                             |  |   |   |   |   |   |   |   |   |   |   |   |    |    |    |    |    |    |    |    |    |    |    |    |    |    |    |    |    |    |    |    |    |    |  |  |
| 20     | 21<br>President's Day                                                      | 22<br>Washington's Birthday                                                                                                                                                                                                                                                                                                                                                                                                                                                                                                                                              | 23<br>Purim Katan<br>EVENING WITH THE KIDS TRIVIA NIGHT AT CCYS (T&M)<br> | 24<br>Full Moon | 25     | 26<br>MOTOCROSS WITH CCYS AT THE CIVIC CENTER (SLAK)<br> |   |   |   |   |   |   |   |   |   |   |   |   |    |    |    |    |    |    |    |    |    |    |    |    |    |    |    |    |    |    |    |    |    |    |  |  |  |  |  |                                                                                                                                                                                                                                                                                                                                                                                                                                                                                             |  |   |   |   |   |   |   |   |   |   |   |   |    |    |    |    |    |    |    |    |    |    |    |    |    |    |    |    |    |    |    |    |    |    |  |  |
| 27     | 28<br>T25 BOARD MEETING<br>                                                | <table border="1"> <caption>Jan 2005</caption> <tr><th>S</th><th>M</th><th>T</th><th>W</th><th>T</th><th>F</th><th>S</th></tr> <tr><td>2</td><td>3</td><td>4</td><td>5</td><td>6</td><td>7</td><td>8</td></tr> <tr><td>9</td><td>10</td><td>11</td><td>12</td><td>13</td><td>14</td><td>15</td></tr> <tr><td>16</td><td>17</td><td>18</td><td>19</td><td>20</td><td>21</td><td>22</td></tr> <tr><td>23</td><td>24</td><td>25</td><td>26</td><td>27</td><td>28</td><td>29</td></tr> <tr><td>30</td><td>31</td><td></td><td></td><td></td><td></td><td></td></tr> </table> |                                                                           | S               | M      | T                                                        | W | T | F | S | 2 | 3 | 4 | 5 | 6 | 7 | 8 | 9 | 10 | 11 | 12 | 13 | 14 | 15 | 16 | 17 | 18 | 19 | 20 | 21 | 22 | 23 | 24 | 25 | 26 | 27 | 28 | 29 | 30 | 31 |  |  |  |  |  | <table border="1"> <caption>Mar 2005</caption> <tr><th>S</th><th>M</th><th>T</th><th>W</th><th>T</th><th>F</th><th>S</th></tr> <tr><td>6</td><td>7</td><td>8</td><td>9</td><td>10</td><td>11</td><td>12</td></tr> <tr><td>13</td><td>14</td><td>15</td><td>16</td><td>17</td><td>18</td><td>19</td></tr> <tr><td>20</td><td>21</td><td>22</td><td>23</td><td>24</td><td>25</td><td>26</td></tr> <tr><td>27</td><td>28</td><td>29</td><td>30</td><td>31</td><td></td><td></td></tr> </table> |  | S | M | T | W | T | F | S | 6 | 7 | 8 | 9 | 10 | 11 | 12 | 13 | 14 | 15 | 16 | 17 | 18 | 19 | 20 | 21 | 22 | 23 | 24 | 25 | 26 | 27 | 28 | 29 | 30 | 31 |  |  |
| S      | M                                                                          | T                                                                                                                                                                                                                                                                                                                                                                                                                                                                                                                                                                        | W                                                                         | T               | F      | S                                                        |   |   |   |   |   |   |   |   |   |   |   |   |    |    |    |    |    |    |    |    |    |    |    |    |    |    |    |    |    |    |    |    |    |    |  |  |  |  |  |                                                                                                                                                                                                                                                                                                                                                                                                                                                                                             |  |   |   |   |   |   |   |   |   |   |   |   |    |    |    |    |    |    |    |    |    |    |    |    |    |    |    |    |    |    |    |    |    |    |  |  |
| 2      | 3                                                                          | 4                                                                                                                                                                                                                                                                                                                                                                                                                                                                                                                                                                        | 5                                                                         | 6               | 7      | 8                                                        |   |   |   |   |   |   |   |   |   |   |   |   |    |    |    |    |    |    |    |    |    |    |    |    |    |    |    |    |    |    |    |    |    |    |  |  |  |  |  |                                                                                                                                                                                                                                                                                                                                                                                                                                                                                             |  |   |   |   |   |   |   |   |   |   |   |   |    |    |    |    |    |    |    |    |    |    |    |    |    |    |    |    |    |    |    |    |    |    |  |  |
| 9      | 10                                                                         | 11                                                                                                                                                                                                                                                                                                                                                                                                                                                                                                                                                                       | 12                                                                        | 13              | 14     | 15                                                       |   |   |   |   |   |   |   |   |   |   |   |   |    |    |    |    |    |    |    |    |    |    |    |    |    |    |    |    |    |    |    |    |    |    |  |  |  |  |  |                                                                                                                                                                                                                                                                                                                                                                                                                                                                                             |  |   |   |   |   |   |   |   |   |   |   |   |    |    |    |    |    |    |    |    |    |    |    |    |    |    |    |    |    |    |    |    |    |    |  |  |
| 16     | 17                                                                         | 18                                                                                                                                                                                                                                                                                                                                                                                                                                                                                                                                                                       | 19                                                                        | 20              | 21     | 22                                                       |   |   |   |   |   |   |   |   |   |   |   |   |    |    |    |    |    |    |    |    |    |    |    |    |    |    |    |    |    |    |    |    |    |    |  |  |  |  |  |                                                                                                                                                                                                                                                                                                                                                                                                                                                                                             |  |   |   |   |   |   |   |   |   |   |   |   |    |    |    |    |    |    |    |    |    |    |    |    |    |    |    |    |    |    |    |    |    |    |  |  |
| 23     | 24                                                                         | 25                                                                                                                                                                                                                                                                                                                                                                                                                                                                                                                                                                       | 26                                                                        | 27              | 28     | 29                                                       |   |   |   |   |   |   |   |   |   |   |   |   |    |    |    |    |    |    |    |    |    |    |    |    |    |    |    |    |    |    |    |    |    |    |  |  |  |  |  |                                                                                                                                                                                                                                                                                                                                                                                                                                                                                             |  |   |   |   |   |   |   |   |   |   |   |   |    |    |    |    |    |    |    |    |    |    |    |    |    |    |    |    |    |    |    |    |    |    |  |  |
| 30     | 31                                                                         |                                                                                                                                                                                                                                                                                                                                                                                                                                                                                                                                                                          |                                                                           |                 |        |                                                          |   |   |   |   |   |   |   |   |   |   |   |   |    |    |    |    |    |    |    |    |    |    |    |    |    |    |    |    |    |    |    |    |    |    |  |  |  |  |  |                                                                                                                                                                                                                                                                                                                                                                                                                                                                                             |  |   |   |   |   |   |   |   |   |   |   |   |    |    |    |    |    |    |    |    |    |    |    |    |    |    |    |    |    |    |    |    |    |    |  |  |
| S      | M                                                                          | T                                                                                                                                                                                                                                                                                                                                                                                                                                                                                                                                                                        | W                                                                         | T               | F      | S                                                        |   |   |   |   |   |   |   |   |   |   |   |   |    |    |    |    |    |    |    |    |    |    |    |    |    |    |    |    |    |    |    |    |    |    |  |  |  |  |  |                                                                                                                                                                                                                                                                                                                                                                                                                                                                                             |  |   |   |   |   |   |   |   |   |   |   |   |    |    |    |    |    |    |    |    |    |    |    |    |    |    |    |    |    |    |    |    |    |    |  |  |
| 6      | 7                                                                          | 8                                                                                                                                                                                                                                                                                                                                                                                                                                                                                                                                                                        | 9                                                                         | 10              | 11     | 12                                                       |   |   |   |   |   |   |   |   |   |   |   |   |    |    |    |    |    |    |    |    |    |    |    |    |    |    |    |    |    |    |    |    |    |    |  |  |  |  |  |                                                                                                                                                                                                                                                                                                                                                                                                                                                                                             |  |   |   |   |   |   |   |   |   |   |   |   |    |    |    |    |    |    |    |    |    |    |    |    |    |    |    |    |    |    |    |    |    |    |  |  |
| 13     | 14                                                                         | 15                                                                                                                                                                                                                                                                                                                                                                                                                                                                                                                                                                       | 16                                                                        | 17              | 18     | 19                                                       |   |   |   |   |   |   |   |   |   |   |   |   |    |    |    |    |    |    |    |    |    |    |    |    |    |    |    |    |    |    |    |    |    |    |  |  |  |  |  |                                                                                                                                                                                                                                                                                                                                                                                                                                                                                             |  |   |   |   |   |   |   |   |   |   |   |   |    |    |    |    |    |    |    |    |    |    |    |    |    |    |    |    |    |    |    |    |    |    |  |  |
| 20     | 21                                                                         | 22                                                                                                                                                                                                                                                                                                                                                                                                                                                                                                                                                                       | 23                                                                        | 24              | 25     | 26                                                       |   |   |   |   |   |   |   |   |   |   |   |   |    |    |    |    |    |    |    |    |    |    |    |    |    |    |    |    |    |    |    |    |    |    |  |  |  |  |  |                                                                                                                                                                                                                                                                                                                                                                                                                                                                                             |  |   |   |   |   |   |   |   |   |   |   |   |    |    |    |    |    |    |    |    |    |    |    |    |    |    |    |    |    |    |    |    |    |    |  |  |
| 27     | 28                                                                         | 29                                                                                                                                                                                                                                                                                                                                                                                                                                                                                                                                                                       | 30                                                                        | 31              |        |                                                          |   |   |   |   |   |   |   |   |   |   |   |   |    |    |    |    |    |    |    |    |    |    |    |    |    |    |    |    |    |    |    |    |    |    |  |  |  |  |  |                                                                                                                                                                                                                                                                                                                                                                                                                                                                                             |  |   |   |   |   |   |   |   |   |   |   |   |    |    |    |    |    |    |    |    |    |    |    |    |    |    |    |    |    |    |    |    |    |    |  |  |



### UPCOMING IN MARCH

**General Meeting** — 3/9/05

**Preschool Playtime** — 3/14/05  
Tutoring & Mentoring  
Contact: Kerry McCombs  
(345.1176)

**Evening with the Kids** — 3/30/05  
Tutoring & Mentoring  
Contact: Kerry McCombs  
(345.1176)

See website for additional details:  
<http://www.Tallahassee25.org>